



NORTHLAND STEEL PRODUCTS
LIMITED

60 -62 COVE ROAD, WAIPU.
P.O. BOX 59, WAIPU,
NEW ZEALAND.
PHONE (09) 432 - 0146 FAX (09) 432 - 0481
E-MAIL:-nspl@xtra.co.nz

1st SEPTEMBER 2014

EXCAVATOR BUCKET & ATTACHMENT PRICE LIST

GST Not Included Freight Not Included Nett Prices ex Works, Waipu

18 to 21 TONNE MACHINE WEIGHT

1./ **STANDARD WIDE BUCKET** NSP Design - General Purpose

<u>Width</u>	<u>Weight kgs</u>
1800mm	576
2000mm	606
2100mm	636
2200mm	666
2400mm	705

When using Tilt Hitches order Tapered End Buckets @ 5% Extra
Wear Strips Fitted as Standard
Optional Extra's: Bolt on Reversible Cutting Edge

2./ **STANDARD DIGGING BUCKET** NSP Design

Width = Actual Bucket Only - Side Cutters Additional to Width + 120mm
Side Cutters Standard - Bolt On
Standard Teeth Vertical Pinned 35 Series (Includes Adaptor)
Price - Includes Teeth & Side Cutters

<u>Width</u>	<u>No. of Teeth</u>	<u>Weight kgs</u>
600mm	3	485
740mm x 0.45m ³	4	540
STD 1030mm x 0.7m ³	5	700
1170mm x 0.8m ³	5	742
1350mm x 0.9m ³	6	800

3./ **STANDARD SPADE FRAME** Weight - 325 kgs

NSP Design - with Grader Bolts (2 3/4" x 7/8")

<u>SPADES</u>		<u>SPADE BUCKETS</u>	
<u>Width</u>	<u>Weight kgs</u>	<u>Width</u>	<u>Weight kgs</u>
500mm	115	300mm	330
600mm	130	400mm	325
		500mm	360
		600mm	390

4./ **QUICK COUPLER** - (Drawpin Type) Weight - 225 kgs

5./ **SINGLE POINT RIPPER** Price Weight
with ESCO 25R-12 Tip 428 kgs

6./ **SINGLE RAM HYDRAULIC TILT BUCKET** **TWIN RAM HYDRAULIC TILT BUCKET**

<u>Width</u>	<u>Weight</u>	<u>Width</u>	<u>Weight</u>
1880mm	930	2000mm	1085
2000mm	970	2100mm	1125
2100mm	1010		

7./ **STICK ROOT RAKE - TYPE 1** Weight - 910 kgs

7./ **60° VEE BUCKET - (Teeth Optional Extra)** Weight -

8./ Plain Bucket Pins (Mild Steel) Ø80

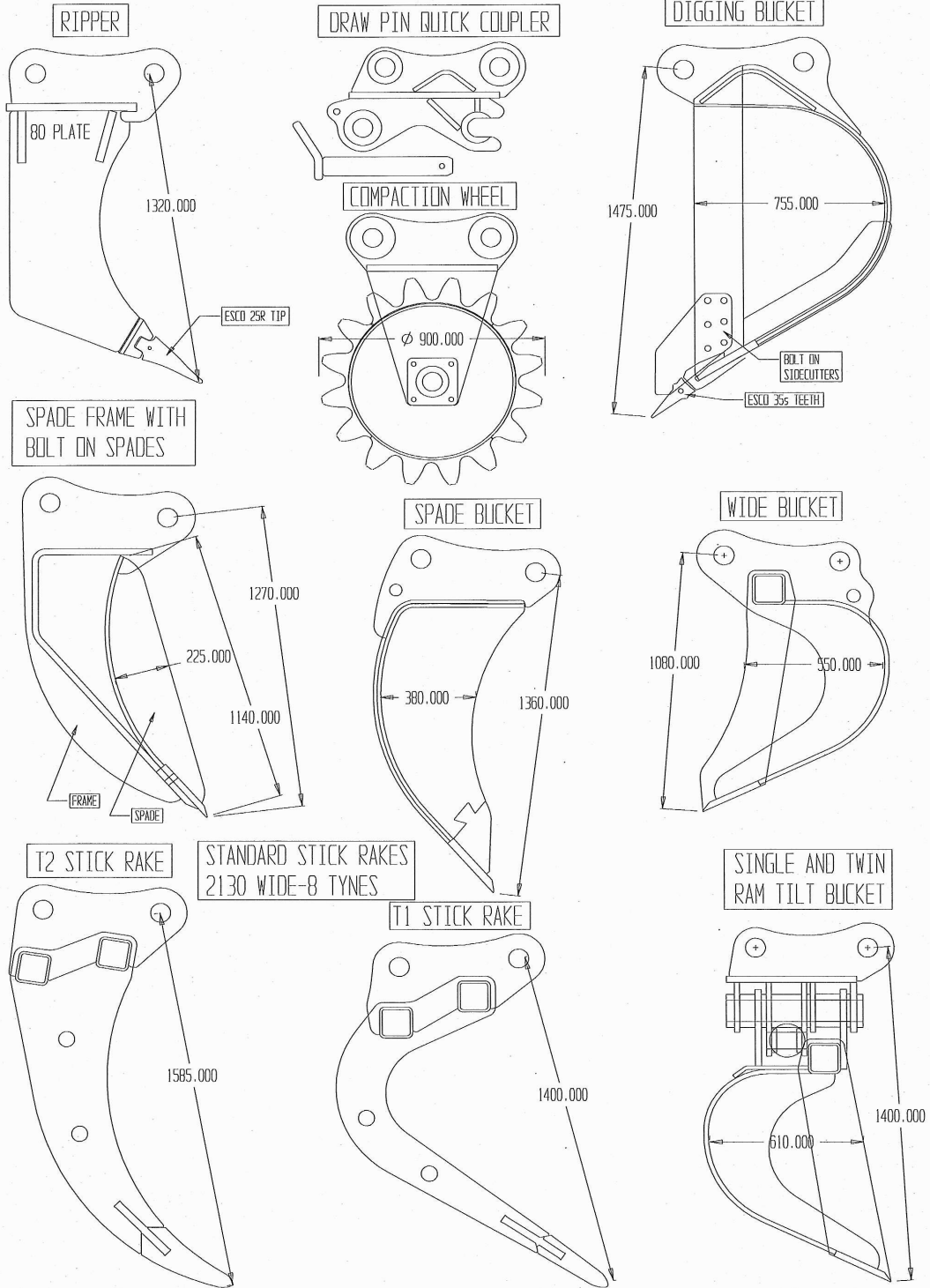
Weights (kgs) are only Approximate
PRICES SUBJECT TO CHANGE WITHOUT NOTICE



NORTHLAND STEEL PRODUCTS
LIMITED

60-62 COVE ROAD, WAIPU.
P.O. BOX 59, WAIPU,
NEW ZEALAND.
PHONE (09) 432-0146 FAX (09) 432-0481
E-MAIL:-nsp@xtra.co.nz

STANDARD 18-21 TON ATTACHMENTS



CAN CHANGE OR CUSTOM BUILD ANY ATTACHMENT TO SUIT